

PIGMENTED LESIONS

WHEN TO TREAT AND WHEN TO REFER

Nicholas J Lowe

MB, ChB, MD, FRCP, FACP

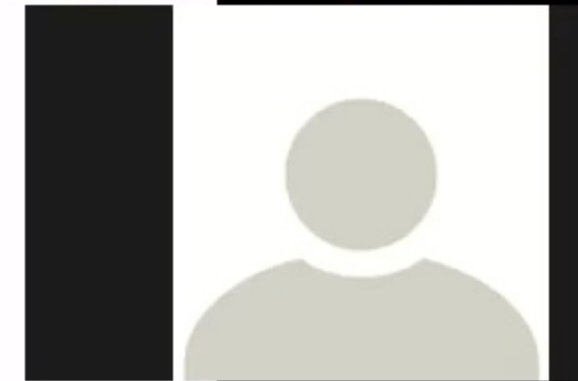
Consultant Dermatologist

Cranley Clinic, London

Clinical Professor UCLA , Los Angeles



Vizle





<https://vizle.offnote.co>

Contact us: vizle@offnote.co

This document was generated automatically by **Vizle**

Your **Personal Video Reader Assistant**

Learn from Videos **Faster** and **Smarter**

VIZLE PRO / BIZ

- Convert *entire* videos ^{PDF, PPT}
- *Customize* to retain all essential content
- Include Spoken *Transcripts*
- Customer support

Visit <https://vizle.offnote.co/pricing> to learn more

VIZLE FREE PLAN

- Convert videos *partially* ^{PDF only}
- Slides may be *skipped**
- Usage restrictions
- No Customer support

Visit <https://vizle.offnote.co> to try free

Login to Vizle to unlock more slides*



Symmetrical



Asymmetrical



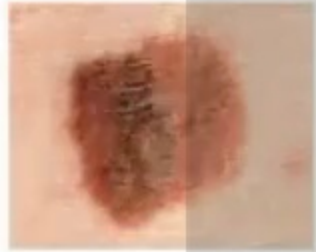
Borders are even



Borders are uneven



One Color



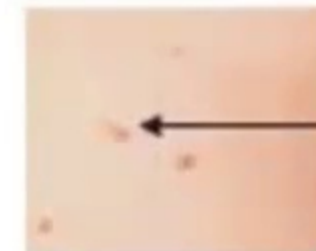
Multiple Colors



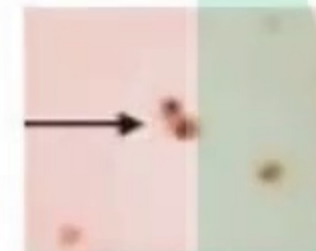
Smaller than 1/4 Inch



Larger than 1/4 Inch



Ordinary Mole



Changing in size, shape and color

Suspicious Signs for Skin Malignancy

A

B

C

D

E

A - Asymmetry

B - Border irregularity

C - Colour variegation

D - Diameter greater than 6 mm
(tip of pencil head)

E - Enlargement



<https://vizle.offnote.co>

Contact us: vizle@offnote.co

This document was generated automatically by **Vizle**

Your **Personal Video Reader Assistant**

Learn from Videos **Faster** and **Smarter**

VIZLE PRO / BIZ

- Convert *entire* videos ^{PDF, PPT}
- *Customize* to retain all essential content
- Include Spoken *Transcripts*
- Customer support

Visit <https://vizle.offnote.co/pricing> to learn more

VIZLE FREE PLAN

- Convert videos *partially* ^{PDF only}
- Slides may be *skipped**
- Usage restrictions
- No Customer support

Visit <https://vizle.offnote.co> to try free

Login to Vizle to unlock more slides*