

Bio Aulas



INSCREVA-SE E DEIXE SEU LIKE ;)



<https://vizle.offnote.co>

Contact us: vizle@offnote.co

This document was generated automatically by **Vizle**

Your **Personal Video Reader Assistant**

Learn from Videos **Faster** and **Smarter**

VIZLE PRO / BIZ

PDF, PPT Watermarks

- Convert *entire* videos
- *Customize* to retain all essential content
- Include Spoken *Transcripts*
- Customer support

Visit <https://vizle.offnote.co/pricing> to learn more

VIZLE FREE PLAN

PDF only Watermarks

- Convert videos *partially*
- Slides may be *skipped**
- Usage restrictions
- No Customer support

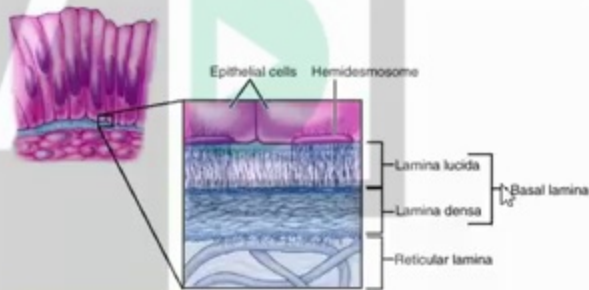
Visit <https://vizle.offnote.co> to try free

Login to Vizle to unlock more slides*

TECIDO EPITELIAL - EPITÉLIO

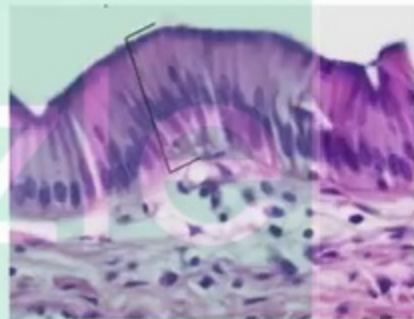
CARACTERÍSTICAS:

1. CÉLULAS JUSTAPOSTAS
2. POUCA MATRIZ EXTRACELULAR
3. AVASCULAR
4. ESTÁ SOBRE UM TECIDO CONJUNTIVO



FUNÇÕES:

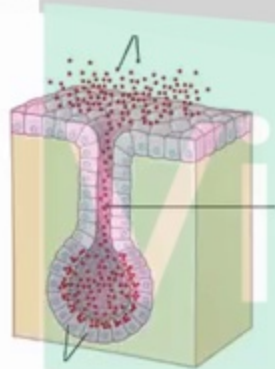
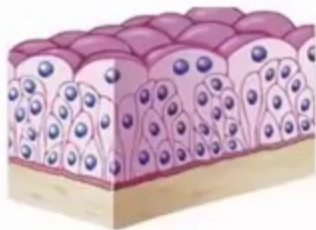
- REVESTIMENTO
- ABSORÇÃO E SECREÇÃO DE SUBSTÂNCIAS



TECIDO EPITELIAL

TIPOS:

- TECIDO EPITELIAL DE REVESTIMENTO
- TECIDO EPITELIAL GLANDULAR

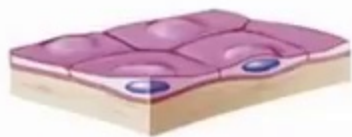


LÚMEN OU LUZ

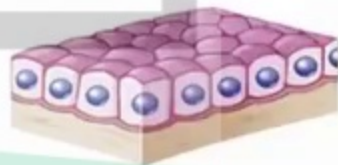
TECIDO EPITELIAL DE REVESTIMENTO

2. EM RELAÇÃO À FORMA DAS CÉLULAS:

PAVIMENTOSAS



CÚBICAS

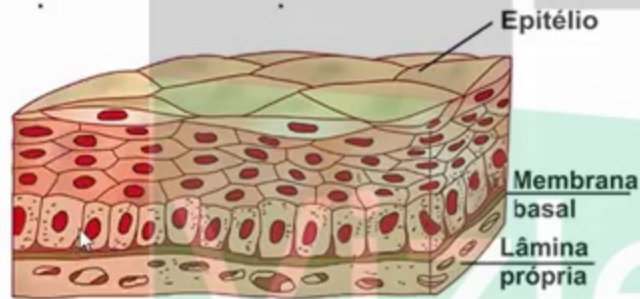


PRISMÁTICAS OU COLUNARES



TECIDO EPITELIAL DE REVESTIMENTO

TECIDO EPITELIAL DE REVESTIMENTO ESTRATIFICADO PAVIMENTOSO





<https://vizle.offnote.co>

Contact us: vizle@offnote.co

This document was generated automatically by **Vizle**

Your **Personal Video Reader Assistant**

Learn from Videos **Faster** and **Smarter**

VIZLE **PRO / BIZ**

PDF, PPT ~~Watermarks~~

- Convert *entire* videos
- *Customize* to retain all essential content
- Include Spoken *Transcripts*
- Customer support

Visit <https://vizle.offnote.co/pricing> to learn more

VIZLE **FREE PLAN**

PDF only ~~Watermarks~~

- Convert videos *partially*
- Slides may be *skipped**
- Usage restrictions
- No Customer support

Visit <https://vizle.offnote.co> to try free

Login to Vizle to unlock more slides*