

V



Vizle



OCCUSAL EQUILIBRATION

Temple University
Kornberg School of Dentistry

Scott Nakamura, DMD
Adjunct Clinical Professor
Department of Restorative Dentistry
Kornberg School of Dentistry
Temple University



<https://vizle.offnote.co>

Contact us: vizle@offnote.co

This document was generated automatically by **Vizle**

Your **Personal Video Reader Assistant**

Learn from Videos **Faster** and **Smarter**

VIZLE PRO / BIZ

PDF, PPT ~~Watermarks~~

- Convert *entire* videos
- *Customize* to retain all essential content
- Include Spoken *Transcripts*
- Customer support

Visit <https://vizle.offnote.co/pricing> to learn more

VIZLE FREE PLAN

PDF only ~~Watermarks~~

- Convert videos *partially*
- Slides may be *skipped**
- Usage restrictions
- No Customer support

Visit <https://vizle.offnote.co> to try free

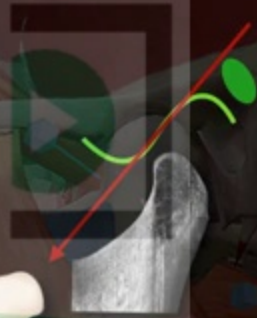
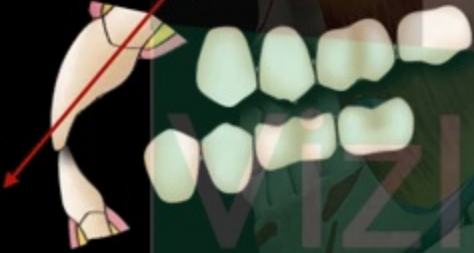
Login to Vizle to unlock more slides*



ANTERIOR GUIDANCE VARIATIONS

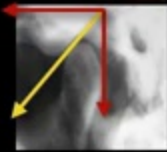
Incisal Inclination
(Variable)

Average



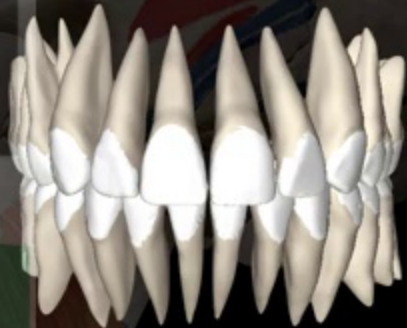
Condylar Inclination
(Fixed)

Average



Centric relation (CR) - The maxillo-mandibular relationship in which the condyles are in the anterior-superior position against the slopes of the articular eminences. **Anatomical position independent of teeth.**

- ▶ **Maximum intercuspation or maximum intercuspal position (MIP)** - Complete intercuspation of the opposing teeth independent of condylar position
- ▶ **Centric occlusion (CO)** - The occlusion of opposing teeth when the mandible is in centric relation. This may not coincide with maximum intercuspation





OCCUSAL EQUILIBRATION - STEPS

- ▶ Step 1 - Preliminary grinding
- ▶ Step 2 - Correction of tooth contacts in centric occlusion
- ▶ Step 3 - Correction of protrusive occlusion
- ▶ Step 4 - Correction of working contacts
- ▶ Step 5 - Correction of non-working or balancing contacts



STEP 3 - CORRECTIVE GRINDING FOR PROTRUSIVE MOVEMENTS

- ▶ Rule 1 - In the anterior, reduce the lingual inclines of the maxillary anterior teeth rather than mandibular anterior teeth since they are centric occluding surfaces
- ▶ Rule 2 - In the posterior, centric holding cusps may be recontoured NOT reduced
- ▶ Rule 3 - If necessary, in the posterior, cuspal inclines and non-supporting cusps may be reduced



<https://vizle.offnote.co>

Contact us: vizle@offnote.co

This document was generated automatically by **Vizle**

Your **Personal Video Reader Assistant**

Learn from Videos **Faster** and **Smarter**

VIZLE PRO / BIZ

PDF, PPT Watermarks

- Convert *entire* videos
- *Customize* to retain all essential content
- Include Spoken *Transcripts*
- Customer support

Visit <https://vizle.offnote.co/pricing> to learn more

VIZLE FREE PLAN

PDF only Watermarks

- Convert videos *partially*
- Slides may be *skipped**
- Usage restrictions
- No Customer support

Visit <https://vizle.offnote.co> to try free

Login to Vizle to unlock more slides*