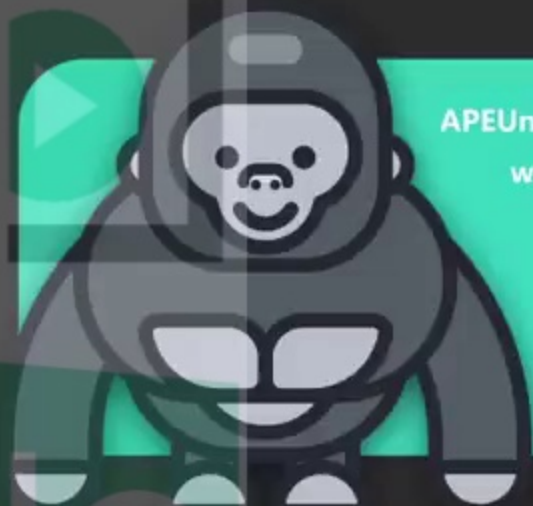


Re-order Paragraphs (RO)

PTE Reading

APEUni PTE Education
www.apeuni.com



Vizle



<https://vizle.offnote.co>

Contact us: vizle@offnote.co

This document was generated automatically by **Vizle**

Your **Personal Video Reader Assistant**

Learn from Videos **Faster** and **Smarter**

VIZLE **PRO / BIZ**

PDF, PPT ~~Watermarks~~

- Convert *entire* videos
- *Customize* to retain all essential content
- Include Spoken *Transcripts*
- Customer support

Visit <https://vizle.offnote.co/pricing> to learn more

VIZLE **FREE PLAN**

PDF only ~~Watermarks~~

- Convert videos *partially*
- Slides may be *skipped**
- Usage restrictions
- No Customer support

Visit <https://vizle.offnote.co> to try free

Login to Vizle to unlock more slides*

Find the first sentence – Independent Sentence

- A. She found that positive emotions were often felt by the actors as they played those character's emotions.
- B. However, the more negative the emotion of the character, the less likely the actor would report feeling that emotion on stage.
- C. In a wonderful set of studies and subsequent book, Elly A. Konijn looked to the question of how much actors are aware of their performance as they perform it, and how much they let the character 'take over' .
- D. She asked Dutch actors to rate their own emotions and the emotions of the characters they were playing across a range of affective states from disgust and anxiety to tenderness and pleasure.

Conjunctions	and	because	as	so	but ...
Conjunctive Adverbs	therefore	however	moreover	finally ...	

- Conjunctions or conjunctive adverbs are used to connect phrases, clauses or sentences.
- E.g. My mom loves dogs. **However**, she is allergic to them.

We normally write in a logical order.

- A person: childhood > youth > old age
- A theory: hypothesis > a survey or an experiment > conclusion

...

Vizle

Step 2: Find the first sentence – Independent Sentence

Analysis:

C before B

First sentence: C

- A. One of the most successful designs of **this period** was the Douglas DC-1, which became the first airliner to be profitable carrying passengers exclusively, starting the modern era of passenger airline service.
- B. By the beginning of World War II, many towns and cities had built airports, and there were numerous qualified pilots available.
- C. During the 1920s and 1930s great progress was made in the field of aviation, including the first transatlantic flight of Alcock and Brown in 1919, Charles Lindbergh's solo transatlantic flight in 1927, and Charles Kingsford Smith's transpacific flight the following year.
- D. **The war** brought many innovations to aviation, including the first jet aircraft and the first liquid-fueled rockets.



<https://vizle.offnote.co>

Contact us: vizle@offnote.co

This document was generated automatically by **Vizle**

Your **Personal Video Reader Assistant**

Learn from Videos **Faster** and **Smarter**

VIZLE **PRO / BIZ**

PDF, PPT ~~Watermarks~~

- Convert *entire* videos
- *Customize* to retain all essential content
- Include Spoken *Transcripts*
- Customer support

Visit <https://vizle.offnote.co/pricing> to learn more

VIZLE **FREE PLAN**

PDF only ~~Watermarks~~

- Convert videos *partially*
- Slides may be *skipped**
- Usage restrictions
- No Customer support

Visit <https://vizle.offnote.co> to try free

Login to Vizle to unlock more slides*