



Vizle
freeCodeCamp (🔥)



<https://vizle.offnote.co>

Contact us: vizle@offnote.co

This document was generated automatically by **Vizle**

Your **Personal Video Reader Assistant**

Learn from Videos **Faster** and **Smarter**

VIZLE PRO / BIZ

- Convert *entire* videos ^{PDF, PPT}
- *Customize* to retain all essential content
- Include Spoken *Transcripts*
- Customer support

Visit <https://vizle.offnote.co/pricing> to learn more

VIZLE FREE PLAN

- Convert videos *partially* ^{PDF only}
- Slides may be *skipped**
- Usage restrictions
- No Customer support

Visit <https://vizle.offnote.co> to try free

Login to Vizle to unlock more slides*



SPSS: An introduction.

Setting up.

Taking a look.

Vizle



Try it

in

SPSS

it

v



vizle

- Output
 - Log
 - CGraph
 - Title
 - Notes
 - DOT PLOT: age
 - Log
 - CGraph
 - Title
 - Notes
 - HISTOGRAM WITH
 - Log
 - CGraph
 - Title
 - Notes
 - BAR OF COUNTS:
 - Log
 - CGraph
 - Title
 - Notes
 - DOT PLOT: incon



```
GGRAPH  
  /GRAPHDATASET NAME="graphdataset"  
  VARIABLES=income[LEVEL=scale]  
  MISSING=LISTWISE REPORTMISSING=NO  
  /GRAPHSPEC SOURCE=VIZTEMPLATE(NAME="Dot Plot"[LOCATION=LOCAL]  
  MAPPING( "x"="income"[DATASET="graphdataset"]))  
  VIZSTYLESHEET="Traditional"[LOCATION=LOCAL]  
  LABEL='DOT PLOT: income'  
  DEFAULTTEMPLATE=NO.
```

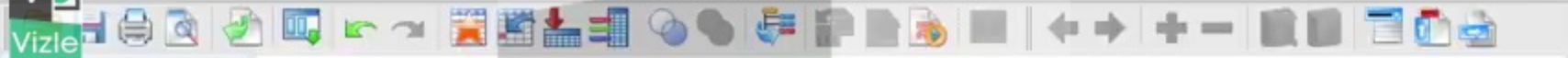
→ GGraph





For data that is
quantitative, scaled,
measured, interval

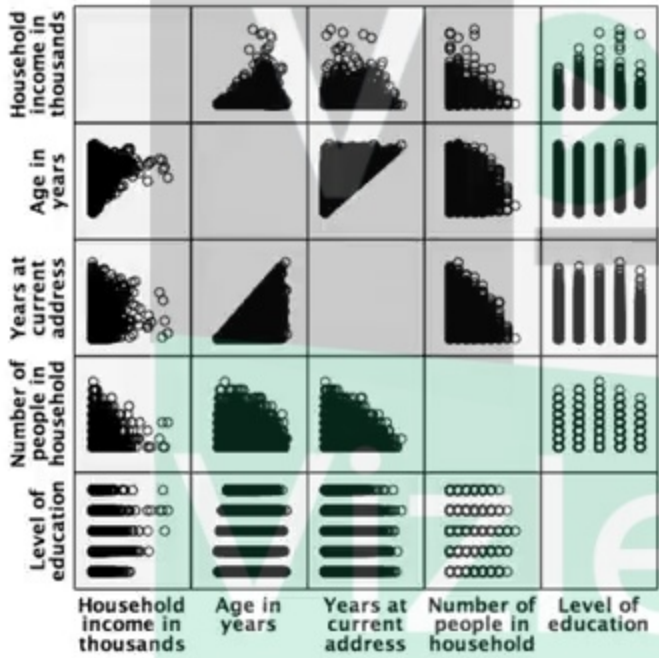
Vizle

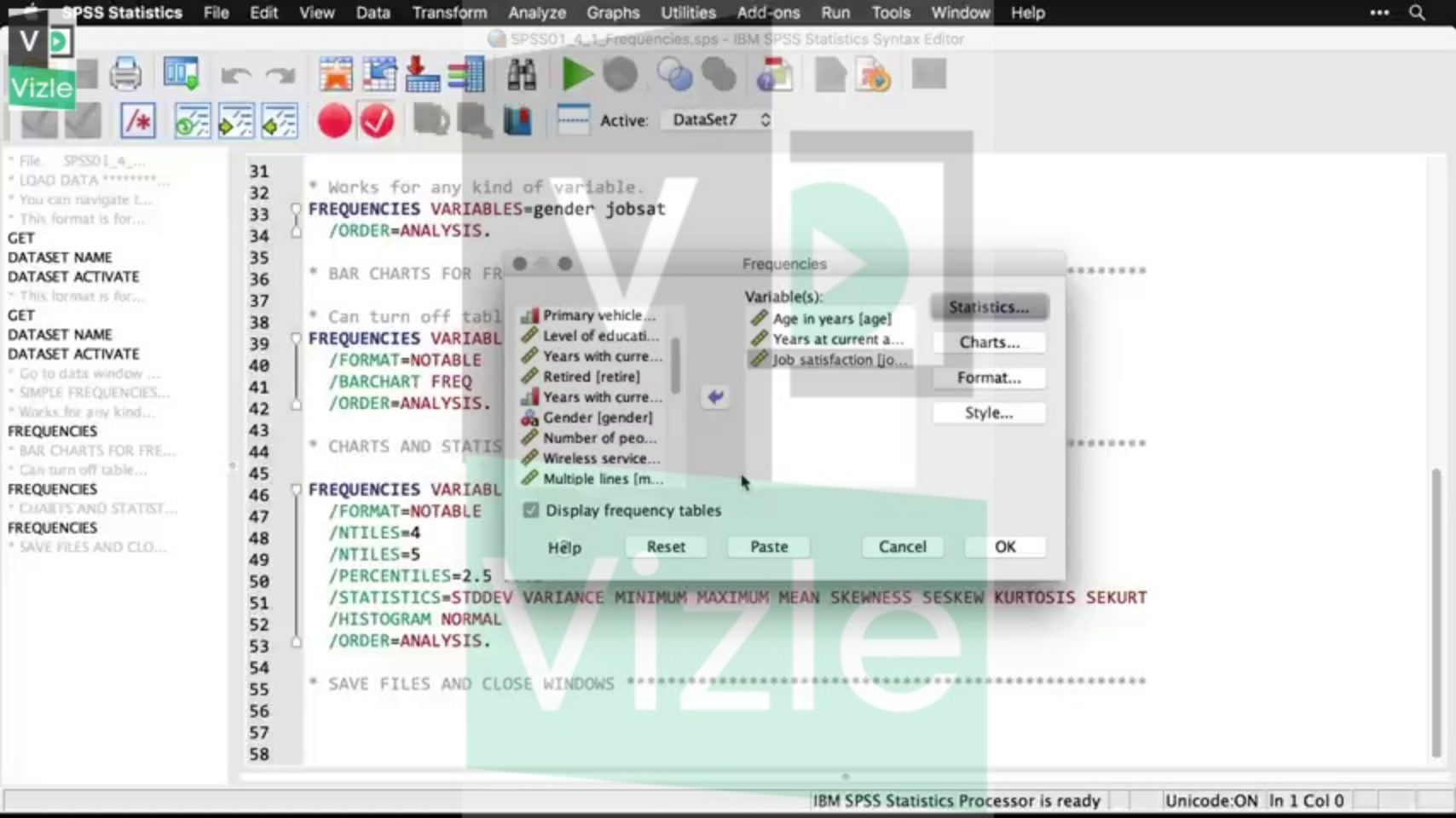


Output

- Log
- Graph
 - Title
 - Notes
 - Scatter of income
- Log
- Graph
 - Title
 - Notes
 - Matrix of income

Graph





31
32
33
34
35
36
37
38
39
40
41
42
43
44
45
46
47
48
49
50
51
52
53
54
55
56
57
58

```
* Works for any kind of variable.  
FREQUENCIES VARIABLES=gender jobsat  
  /ORDER=ANALYSIS.  
  
* BAR CHARTS FOR FREQUENCIES  
  
* Can turn off table  
FREQUENCIES VARIABLES=gender jobsat  
  /FORMAT=NOTABLE  
  /BARCHART FREQUENCIES  
  /ORDER=ANALYSIS.  
  
* CHARTS AND STATISTICS  
FREQUENCIES VARIABLES=gender jobsat  
  /FORMAT=NOTABLE  
  /NTILES=4  
  /NTILES=5  
  /PERCENTILES=2.5  
  /STATISTICS=STDDEV VARIANCE MINIMUM MAXIMUM MEAN SKEWNESS SESKEW KURTOSIS SEKURT  
  /HISTOGRAM NORMAL  
  /ORDER=ANALYSIS.  
  
* SAVE FILES AND CLOSE WINDOWS
```




<https://vizle.offnote.co>

Contact us: vizle@offnote.co

This document was generated automatically by **Vizle**

Your **Personal Video Reader Assistant**

Learn from Videos **Faster** and **Smarter**

VIZLE PRO / BIZ

- Convert *entire* videos ^{PDF, PPT}
- *Customize* to retain all essential content
- Include Spoken *Transcripts*
- Customer support

Visit <https://vizle.offnote.co/pricing> to learn more

VIZLE FREE PLAN

- Convert videos *partially* ^{PDF only}
- Slides may be *skipped**
- Usage restrictions
- No Customer support

Visit <https://vizle.offnote.co> to try free

Login to Vizle to unlock more slides*