

v



Vizle



<https://vizle.offnote.co>

Contact us: [vizle@offnote.co](mailto:vizle@offnote.co)

This document was generated automatically by **Vizle**

Your **Personal Video Reader Assistant**

Learn from Videos **Faster** and **Smarter**

### VIZLE **PRO / BIZ**

PDF, PPT ~~Watermarks~~

- Convert *entire* videos
- *Customize* to retain all essential content
- Include Spoken *Transcripts*
- Customer support

Visit <https://vizle.offnote.co/pricing> to learn more

### VIZLE **FREE PLAN**

PDF only ~~Watermarks~~

- Convert videos *partially*
- Slides may be *skipped*\*
- Usage restrictions
- No Customer support

Visit <https://vizle.offnote.co> to try free

**Login to Vizle** to unlock more slides\*

# New Conduction System Disease Complicating An Acute MI

## SA node dysfunction

Proximal RCA or prox. Cx lesion

## 1<sup>st</sup> degree / 2<sup>nd</sup> degree type 1 AVB

RCA (AVN), Cx (AVN), LAD (His)

## Type 2 2<sup>nd</sup> degree AVB

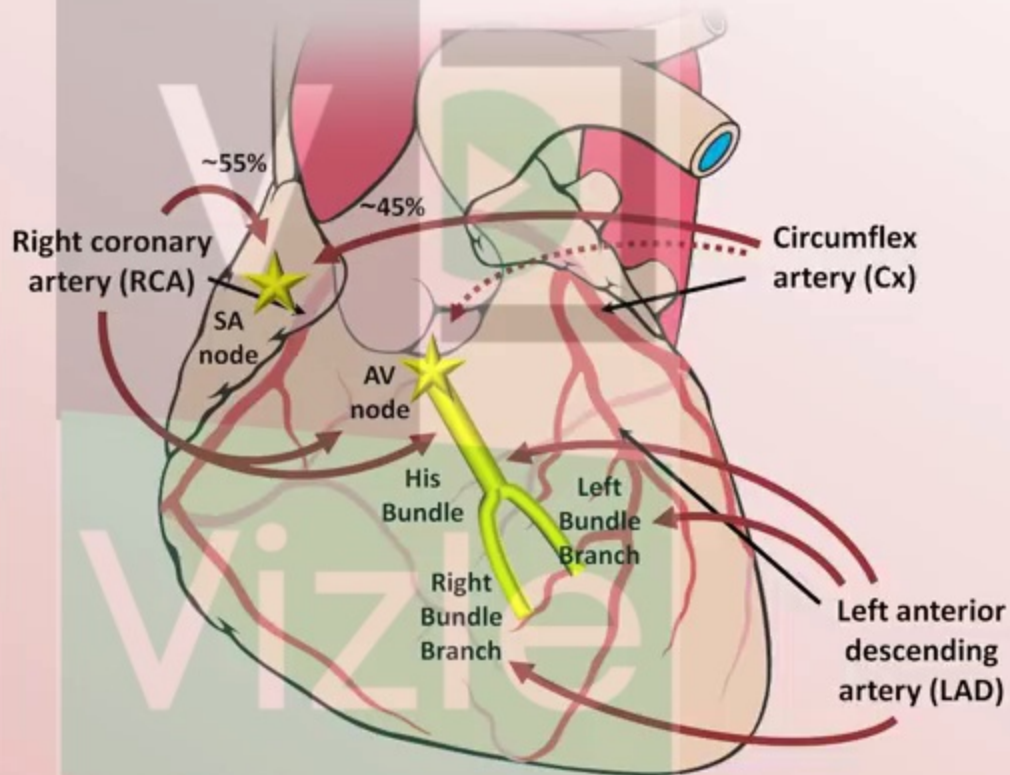
LAD (His), RCA (His)

## 3<sup>rd</sup> degree AVB

LAD (His), RCA (AVN/His), Cx (AVN)

## RBBB/LBBB

LAD



## Right Ventricular Infarct

- Presence of an RV infarct is suggested by:
  - Hypotension and/or acute conduction system problems accompanying an inferior infarct.

# Diagnosis of MI in the Presence of LBBB

## Abridged Sgarbossa's Criteria

ST elevation  $\geq 1\text{mm}$  in a lead with a positive QRS complex.



<https://vizle.offnote.co>

Contact us: [vizle@offnote.co](mailto:vizle@offnote.co)

This document was generated automatically by **Vizle**

Your **Personal Video Reader Assistant**

Learn from Videos **Faster** and **Smarter**

### VIZLE **PRO / BIZ**

PDF, PPT ~~Watermarks~~

- Convert *entire* videos
- *Customize* to retain all essential content
- Include Spoken *Transcripts*
- Customer support

Visit <https://vizle.offnote.co/pricing> to learn more

### VIZLE **FREE PLAN**

PDF only ~~Watermarks~~

- Convert videos *partially*
- Slides may be *skipped*\*
- Usage restrictions
- No Customer support

Visit <https://vizle.offnote.co> to try free

**Login to Vizle** to unlock more slides\*