



Periodontics



<https://vizle.offnote.co>

Contact us: vizle@offnote.co

This document was generated automatically by **Vizle**

Your **Personal Video Reader Assistant**

Learn from Videos **Faster** and **Smarter**

VIZLE **PRO / BIZ**

PDF, PPT ~~Watermarks~~

- Convert *entire* videos
- *Customize* to retain all essential content
- Include Spoken *Transcripts*
- Customer support

Visit <https://vizle.offnote.co/pricing> to learn more

VIZLE **FREE PLAN**

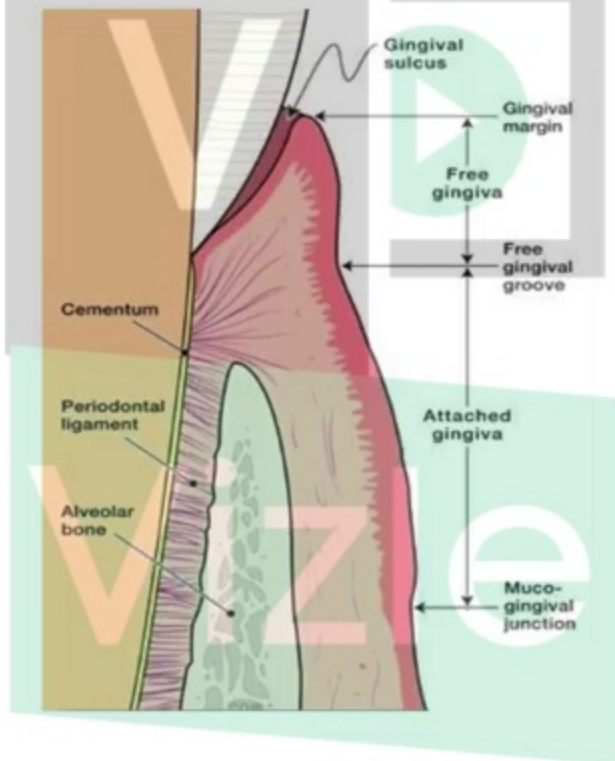
PDF only ~~Watermarks~~

- Convert videos *partially*
- Slides may be *skipped**
- Usage restrictions
- No Customer support

Visit <https://vizle.offnote.co> to try free

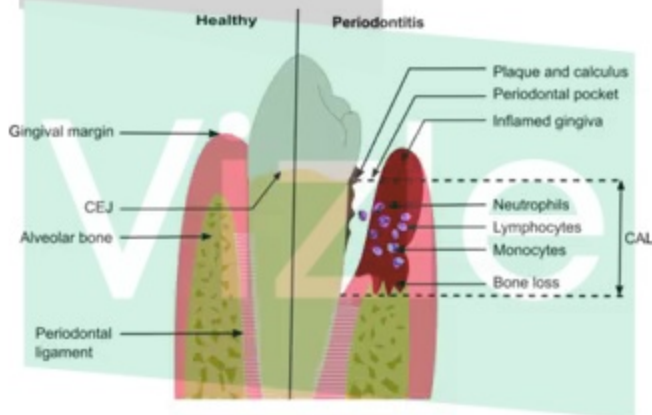
Login to Vizle to unlock more slides*

Normal Periodontium



Pathogenesis

1. Microbial challenge (LPS, antigens) presented by subgingival **plaque** bacteria



Tooth Exam

- Erosion—caused by acidic foods/beverages or gastric acid
- Abrasion—loss of tooth structure by mechanical wear
- Attrition—occlusal wear from functional contacts with opposing teeth
- Abfraction—loss of tooth structure in cervical areas due to tooth flexure
- Hypersensitivity—as a result of exposure of dentinal tubules in root surfaces

Periodontal Exam



PPD= 4mm
CAL= 6mm

PPD= 6mm
CAL= 6mm

CAL= PPD + recession



<https://vizle.offnote.co>

Contact us: vizle@offnote.co

This document was generated automatically by **Vizle**

Your **Personal Video Reader Assistant**

Learn from Videos **Faster** and **Smarter**

VIZLE **PRO / BIZ**

PDF, PPT ~~Watermarks~~

- Convert *entire* videos
- *Customize* to retain all essential content
- Include Spoken *Transcripts*
- Customer support

Visit <https://vizle.offnote.co/pricing> to learn more

VIZLE **FREE PLAN**

PDF only ~~Watermarks~~

- Convert videos *partially*
- Slides may be *skipped**
- Usage restrictions
- No Customer support

Visit <https://vizle.offnote.co> to try free

Login to Vizle to unlock more slides*