

# Ness of Brodgar – the true *Heart of Neolithic Orkney*?



This PDF is generated automatically by **Vizle**.  
Slides created *only for a few minutes* of your Video.



For the full PDF, please **Login to Vizle**.

<https://vizle.offnote.co> (Login via Google, top-right)

**Stay connected** with us:

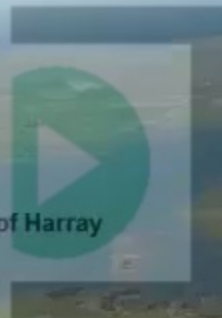
Join us on **Facebook, Discord, Quora, Telegram**.



Loch of Stenness



Loch of Harray



vizle

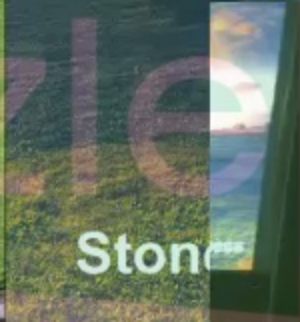
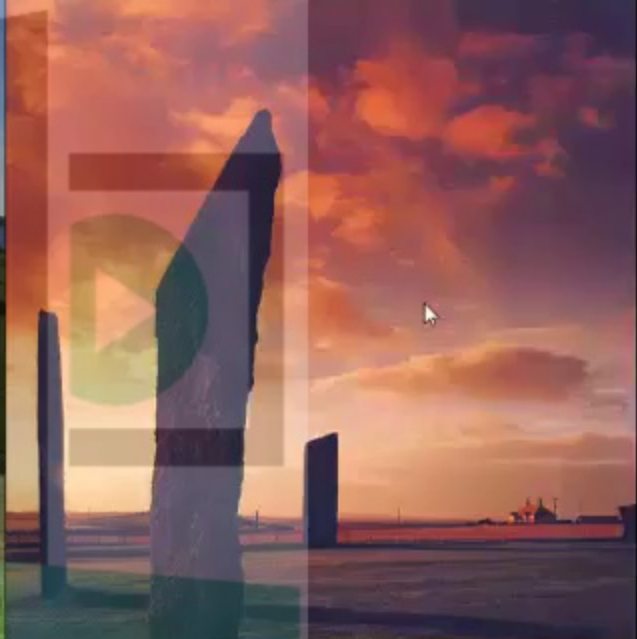
The Heart of  
World H






# Skara Brae village

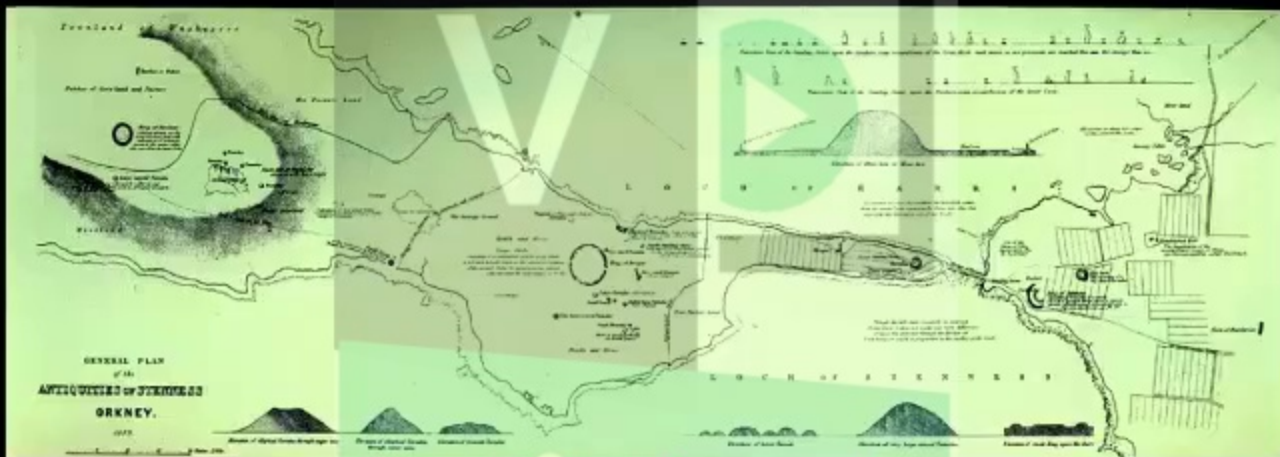




An aerial view of a farm with a barnhouse. The barnhouse is a large, multi-story building with a dark roof, situated in a green field. The surrounding area includes a large circular structure, possibly a pond or a field, and various other farm buildings and structures. The image is overlaid with a semi-transparent 'Vizle' watermark.

Barnhouse

# The Heart of Neolithic Orkney World Heritage Site Research Agenda

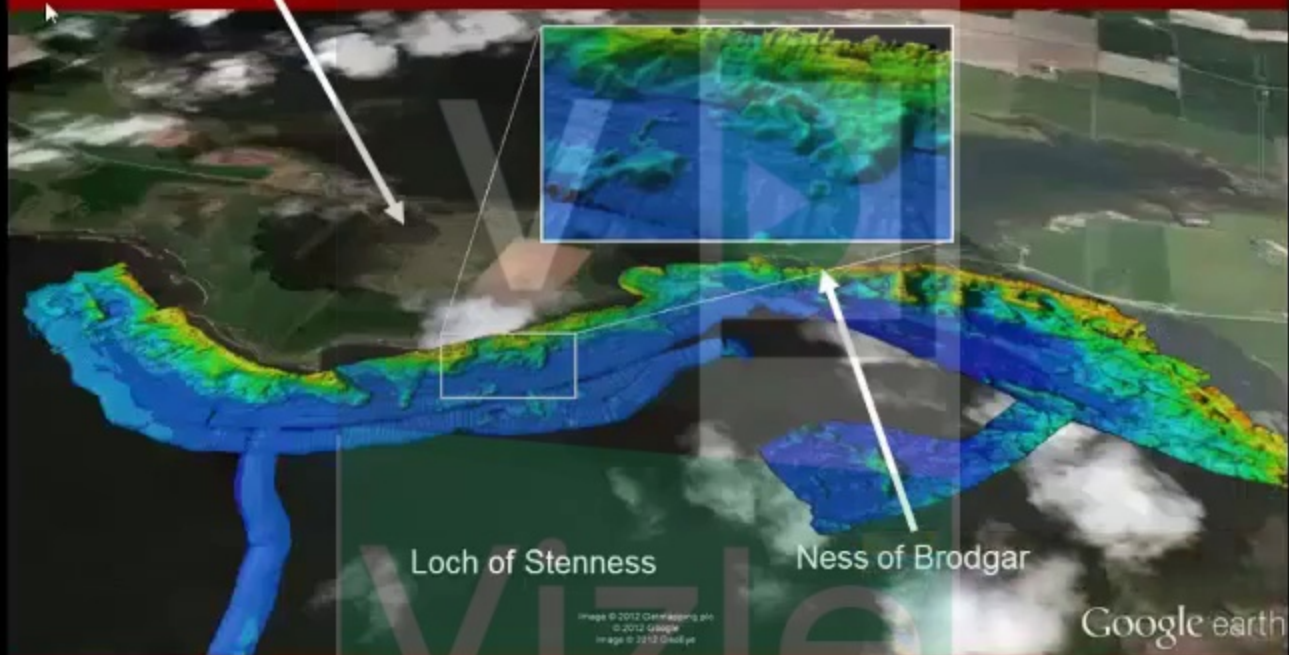




Vestrafjöld Prehistoric Q



Ring of Brodgar



Loch of Stenness

Ness of Brodgar

Google earth

Image © 2012 Getty Images, Inc.  
© 2012 Google  
Image © 2012 Google, Inc.

**The Rising Tide Project**

This PDF is generated automatically by **Vizle**.  
Slides created *only for a few minutes* of your Video.



For the full PDF, please **Login to Vizle**.

<https://vizle.offnote.co> (Login via Google, top-right)

**Stay connected** with us:

Join us on **Facebook, Discord, Quora, Telegram**.