



ISM CAREER CENTER

ISM CAREER CENTER

ISM CAREER CENTER

Vizle



<https://vizle.offnote.co>

Contact us: vizle@offnote.co

This document was generated automatically by **Vizle**

Your **Personal Video Reader Assistant**

Learn from Videos **Faster** and **Smarter**

VIZLE PRO / BIZ

- Convert *entire* videos ^{PDF, PPT}
- *Customize* to retain all essential content
- Include Spoken *Transcripts*
- Customer support

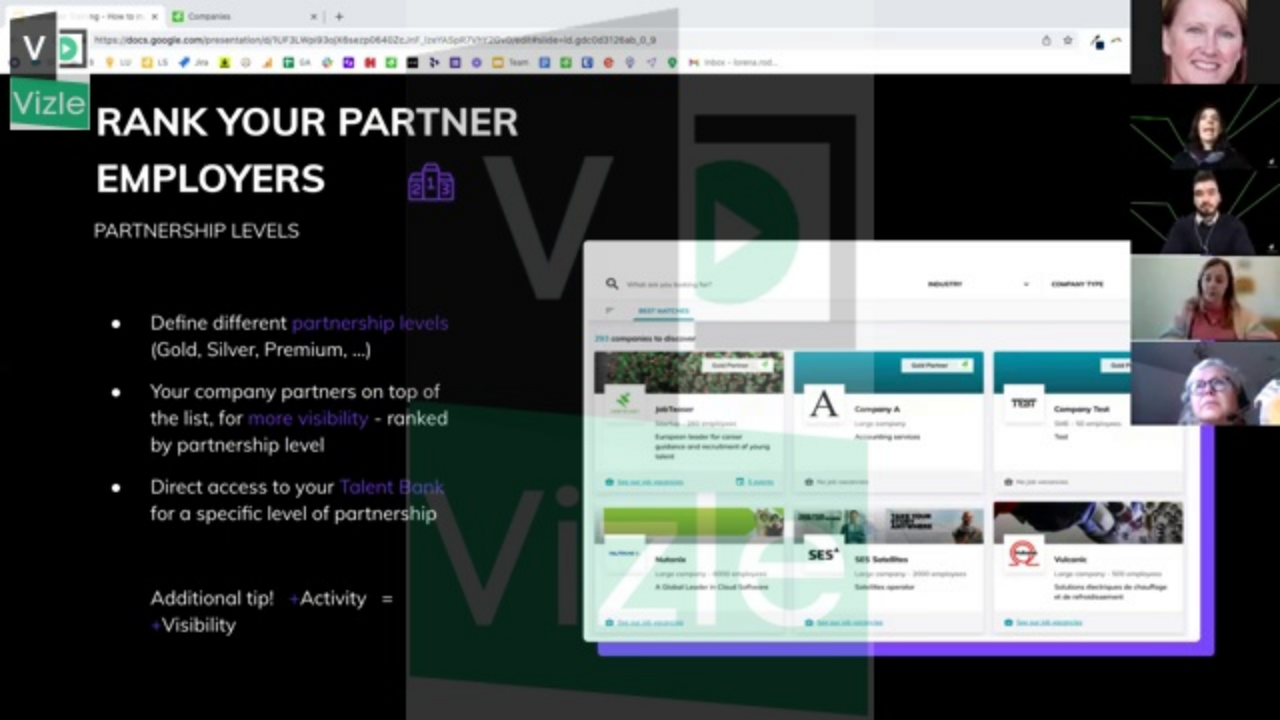
Visit <https://vizle.offnote.co/pricing> to learn more

VIZLE FREE PLAN

- Convert videos *partially* ^{PDF only}
- Slides may be *skipped**
- Usage restrictions
- No Customer support

Visit <https://vizle.offnote.co> to try free

Login to Vizle to unlock more slides*



RANK YOUR PARTNER EMPLOYERS



PARTNERSHIP LEVELS

- Define different **partnership levels** (Gold, Silver, Premium, ...)
- Your company partners on top of the list, for **more visibility** - ranked by partnership level
- Direct access to your **Talent Bank** for a specific level of partnership

Additional tip! +Activity =
+Visibility

SEARCH: What are you looking for?

INDUSTRY | EMPLOYER TYPE

BEST MATCHES

202 companies to discover

JobTanner
200 employees
European leader for career guidance and recruitment of young talent

Company A
Large company
Accounting services

TEST
500 - 999 employees
Test

Multicore
Large company - 4000 employees
A Global Leader in Cloud Software

SES+
SES Software
Large company - 2000 employees
Software operator

Vultronic
Large company - 500 employees
Solutions électroniques de chauffage et de refroidissement

EFFECTIVE RECRUITMENT

TAGS & USEFUL LINKS TO MAXIMIZE VISIBILITY

Help companies to better identify their job opportunities

- Extra visibility for specific types of jobs (i.e. 'urgent' offers, offers for a specific role, sector, program, etc)
- Easier for partners to identify their offers
- Easier for students to search those types of offers

The screenshot shows a job posting form for 'Academy (TESOL) Career Center - Company Account Book Office'. The 'Tags' section is highlighted with a dashed blue box and contains the following items:

- Job Post Opportunities
- Graduate Program
- WAF
- Outing
- MBA

Other visible form fields include:

- Job Category: Select a function
- Start date (MM/YYYY): As soon as possible, Specific month
- Archiving date: No archive (default), Specific month
- Application deadline: No deadline (default), Specific month



Events

https://docs.google.com/presentation/d/1ULF3LWp93oX8sezp06402zInf_jzvYA0pR7vY12Gv0yed9#slide=id.gdc0d3126ab_0_9

Vizle

PURSUe MEMORABLE STUDENT-EMPLOYER INTERACTION

Set employers up for success in event participation

BEFORE THE EVENT

- DEFINE PARTICIPATION OBJECTIVES**
 - Open roles?
 - Narrow desired audience
- ADVISE ON CONTENT STRATEGY**
 - Introduce company representatives
 - E.g. skills workshop, sustainability, highlight drivers for meaningful work
- ENABLE BRAND BUILDING → EMPLOYER OF CHOICE**
 - SME brand recognition
 - Event attendance as social media campaign

Vizle

BEFORE THE EVENT

DEFINE PARTICIPATION OBJECTIVES

- Open roles?
- Narrow desired audience

ADVISE ON CONTENT STRATEGY

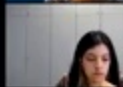
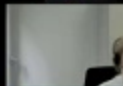
- Introduce company representatives
- E.g. skills workshop, sustainability, highlight drivers for meaningful work

ENABLE BRAND BUILDING → EMPLOYER OF CHOICE

- SME brand recognition
- Event attendance as social media campaign

AGENDA

- Introduction
- Employer brand visibility
- Effective recruitment
- Facilitate student-employer relationship
- Leverage your data to create strategy
- Nurture corporate partnerships
- Partnership packages



CRAFT AND PROMOTE YOUR VALUE PROPOSITION

LET THE WORLD KNOW YOU'RE OPEN FOR NEW PARTNERSHIPS



'WHY RECRUIT AT OUR UNIVERSITY'

Insights into our students

- Population
- Programs
- Mindset
- Skills



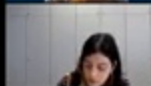
HEAR FROM EMPLOYERS

- Success stories
- Testimonial video
- Illustrate partnerships



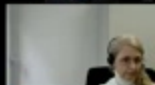
PRESENT YOUR CAREER SERVICES TEAM

- Make it personal
- Emphasize on expertise & human capital
- Call to action



AGENDA

- Introduction
- Employer brand visibility
- Effective recruitment
- Facilitate student-employer relationship
- Leverage your data to create strategy
- Nurture corporate partnerships
- Partnership packages
- Q&A



Job/veer / Back office

https://academy.jobveer.com/en/backend/companies/amazon-emea?edit_translation_locale=en

Vizle

Career Center by Jobveer

Companies

Home > Account > Amazon

amazon Amazon
Largest internet-based retailer in the world

List

English

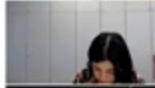

Required information

Industries	Retail Consumer Goods IT / IT Consulting / Software Telecom Engineering Digital / E-commerce Transport / Logistics
Business type	Large company
Brief company overview	Largest internet-based retailer in the world
National ID	
Permalink	amazon-emea
Id	24829
Account type	Full company profile
Partnerships	Not a partner

Cover image

Chart Your Own Path
Internship and Full-time Opportunities for Students

Help



Content



<https://vizle.offnote.co>

Contact us: vizle@offnote.co

This document was generated automatically by **Vizle**

Your **Personal Video Reader Assistant**

Learn from Videos **Faster** and **Smarter**

VIZLE PRO / BIZ

- Convert *entire* videos ^{PDF, PPT}
- *Customize* to retain all essential content
- Include Spoken *Transcripts*
- Customer support

Visit <https://vizle.offnote.co/pricing> to learn more

VIZLE FREE PLAN

- Convert videos *partially* ^{PDF only}
- Slides may be *skipped**
- Usage restrictions
- No Customer support

Visit <https://vizle.offnote.co> to try free

Login to Vizle to unlock more slides*