

Digestive System Summary

Organs

• tongue and
• form bolus



• esophageal
sphincter

• Body, Pylorus
• muscle
• churn
• to form
chyme

• cells make
• cells make
pepsin.

• duodenum



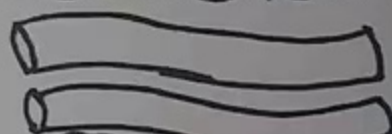
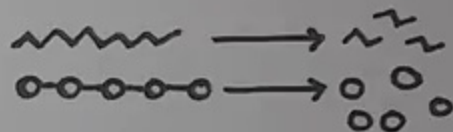
Accessory Organs

- Salivary Glands
 - parotid
 - sublingual
 - submandibular

- Liver
- Gall Bladder

LIVER

- Pancreas



This PDF is generated automatically by **Vizle**.
Slides created *only for a few minutes* of your Video.



For the full PDF, please **Login to Vizle**.

<https://vizle.offnote.co> (Login via Google, top-right)

Stay connected with us:

Join us on **Facebook, Discord, Quora, Telegram**.

Digestive System Summary

Main Organs

Mouth
Teeth, tongue and
Saliva form bolus

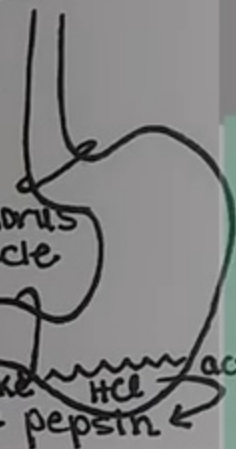


Esophagus
Lower esophageal
sphincter

Stomach
Fundus, Body, Pylorus
3 layers of muscle

Muscles churn
food to form
chyme
- Parietal cells make HCl
- chief cells make pepsin. ← activates!

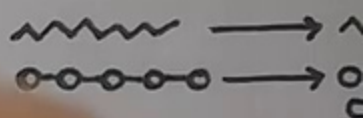
Small Intestine
- Duodenum



Accessory Organs

- Salivary Glands
 - parotid
 - sublingual
 - submandibular

- Liver
- Gall bladder



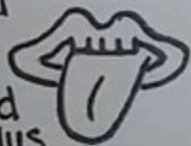

Digestive System

Summary

Main Organs

Mouth

Teeth, tongue and saliva form bolus



Esophagus

Lower esophageal sphincter

Stomach

- Fundus, Body

- 3 Layers

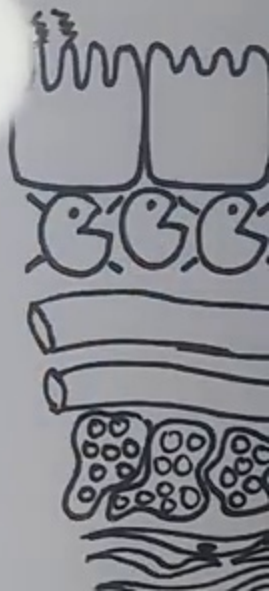
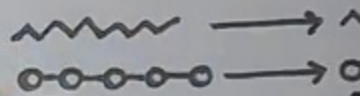
- Mucosa

- Muscularis

- Serosa

- Glands

- Cells



vizle

Digestive System

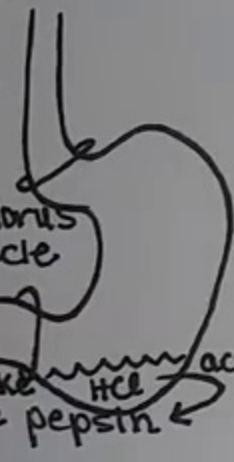
Organs

Tongue and
form bolus



Esophageal
sphincter

Body, Pylorus
of muscle
churn
form
chyme
cells make
cells make pepsin
intestine



Accessory Organs

- Salivary Glands
 - parotid
 - sublingual
 - submandibular

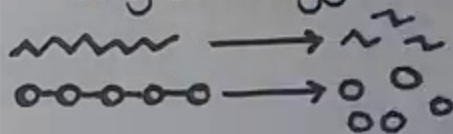
• Liver

• Gall Bladder

LIVER

Summary

Key Histology



Digestive System

Summary

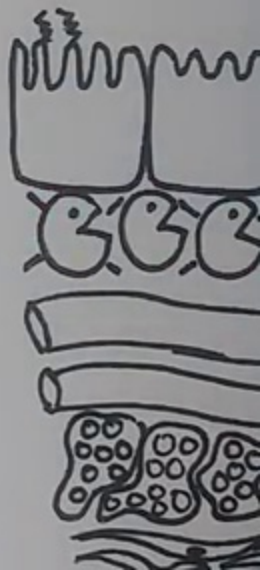
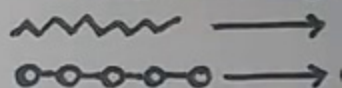
Main Organs

- Mouth
 - Teeth, tongue
 - Saliva form
- Esophagus
 - Lower esophageal sphincter
- Stomach
 - Fundus, Body, Pylorus
 - 3 layers of muscle
 - Muscles churn food to form chyme
 - Parietal cells make HCl
 - Chief cells make pepsin
 - Duodenum

Accessory Organs

- Salivary Glands
 - Parotid
 - Sublingual
 - Submandibular

Key Histology



LIVER

Vizle

Digestive System

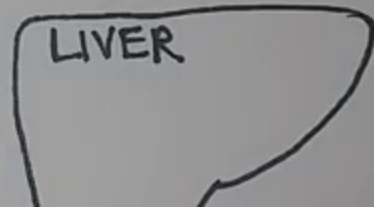
Main Organs

- Mouth
Teeth, tongue and Saliva form bolus
- Esophagus
Lower esophageal sphincter
- Stomach
 - Fundus, Body, Pylorus
 - 3 layers of muscle
 - Muscles churn food to form chyme
 - Parietal cells make HCl
 - chief cells make pepsin
- Small Intestine



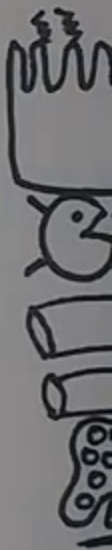
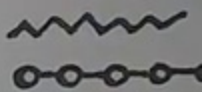
Accessory Organs

- Salivary Glands
 - parotid
 - sublingual
 - submandibular
- Liver
- Gall Bladder



Sun

Key H



Digestive System

Main Organs

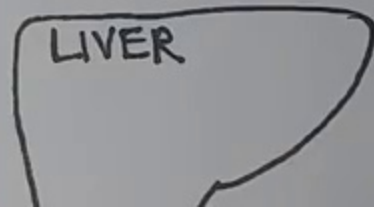
- Mouth
- Teeth



Accessory Organs

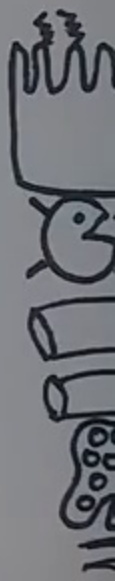
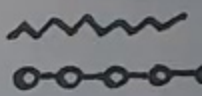
- Salivary Glands
 - parotid
 - sublingual
 - submandibular

- Liver
- Gall Bladder



Sun

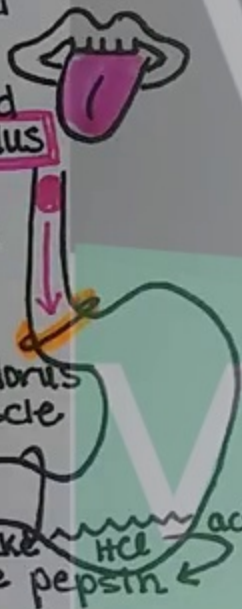
Key H



Digestive System

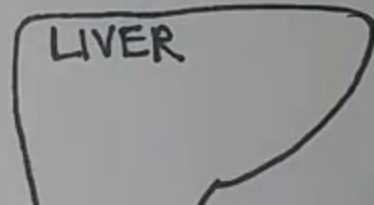
Main Organs

- Mouth
 - Teeth, tongue and saliva form **bolus**
- Esophagus
 - Lower esophageal sphincter
 - peristalsis
- Stomach
 - Fundus, Body, Pylorus
 - 3 layers of muscle
 - Muscles churn food to form **chyme**
 - Parietal cells make **HCl**
 - chief cells make **pepsin**
- Small Intestine



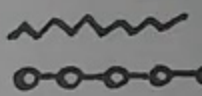
Accessory Organs

- Salivary Glands
 - parotid
 - sublingual
 - submandibular
- Liver
- Gall Bladder



Sun

Key H



This PDF is generated automatically by **Vizle**.
Slides created *only for a few minutes* of your Video.



For the full PDF, please **Login to Vizle**.

<https://vizle.offnote.co> (Login via Google, top-right)

Stay connected with us:

Join us on **Facebook, Discord, Quora, Telegram**.