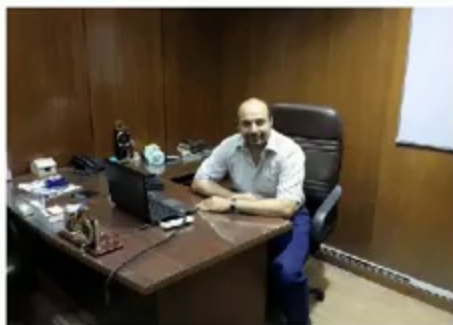
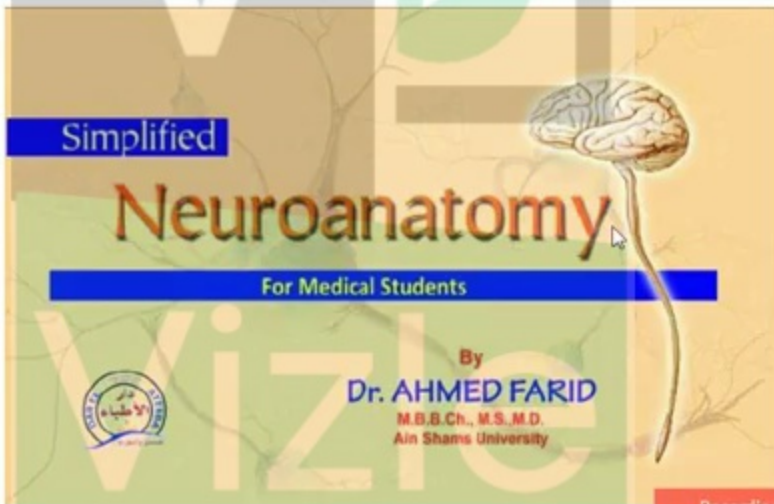


Online Neuroanatomy Course

Descending Pathways



Dr. Ahmed Farid



Attendee list (0)



Ahmed Farid (You)

There are no attendees in the class yet.

Chat (All)

To: All

12

Write your message here.

300

Recording Resumed

Live Chat Support

00:00:04

Pause

Elapsed Time 00:00:25

WizIQ

EN

8:35 PM
11/8/2017

This PDF is generated automatically by **Vizle**.
Slides created *only for a few minutes* of your Video.



For the full PDF, please **Login to Vizle**.

<https://vizle.offnote.co> (Login via Google, top-right)

Stay connected with us:

Join us on **Facebook, Discord, Quora, Telegram**.

edit

Screen sharing

Poll

Breakout room

Ahmed Farid

🔍

🔊

🔌

whiteboard 1

Descending Pathways-Only

2. Slide2

Next

Attendee list (0)

Ahmed Farid (You)

There are no attendees in the class yet.

Chat (All)

To: All 12

Write your message here.

All

Live Chat Support

00:01:43

Pause

Elapsed Time 00:02:05

WizIQ

Descending (motor) pathways

Corticospinal pathway

Lateral corticospinal tract

Anterior corticospinal tract

Lateral pathway

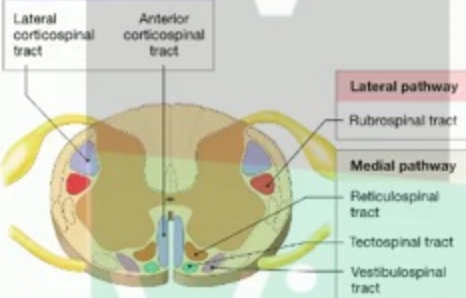
Rubrospinal tract

Medial pathway

Reticulospinal tract

Tectospinal tract

Vestibulospinal tract

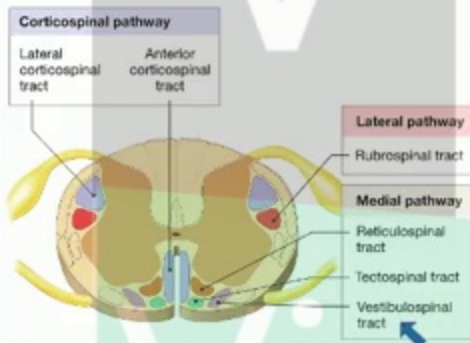


W

Descending (motor) pathways

Pyramidal system

- This system **begins** from the **pyramidal cells** of the **primary motor cortex**.
- **Axons** of these **upper neurons** **descend** into the **brain stem** and **spinal cord** to **synapse** with **lower motor neurons** that **control** skeletal muscles.
- It includes **3 pairs** of tracts:
 - **Cortico-bulbar tracts:** (to **motor cranial nerves nuclei** in the brain stem).
 - **Lateral cortico-spinal tracts:** to the spinal cord, running in the **lateral white column**.
 - **Anterior cortico-spinal tracts:** to the spinal cord, running in the **anterior white column**



Extrapyramidal system

- This system is **concerned** with **subconscious** regulation of **muscle tone** and **movement**, in addition to **subconscious control** of the **balance** needed for each movement.
- It includes **2 pathways**:
 - **Medial pathway:** controlling **movements of trunk and proximal limb muscles** (**vestibulo-spinal, tecto-spinal, and reticulo-spinal tracts**).
 - **Lateral pathway:** controlling **distal limb muscles** with its more **discrete** movements (**rubro-spinal tracts**).

Attendee list (0)

Ahmed Farid (You)

There are no attendees in the class yet.

Chat (All)

To: All

12

Write your message here.

300

All

Live Chat Support

00:06:38

Pause

Elapsed Time 00:07:06

WizIQ

EN

8:41 PM

11/8/2017

This PDF is generated automatically by **Vizle**.
Slides created *only for a few minutes* of your Video.



For the full PDF, please **Login to Vizle**.

<https://vizle.offnote.co> (Login via Google, top-right)

Stay connected with us:

Join us on **Facebook, Discord, Quora, Telegram**.